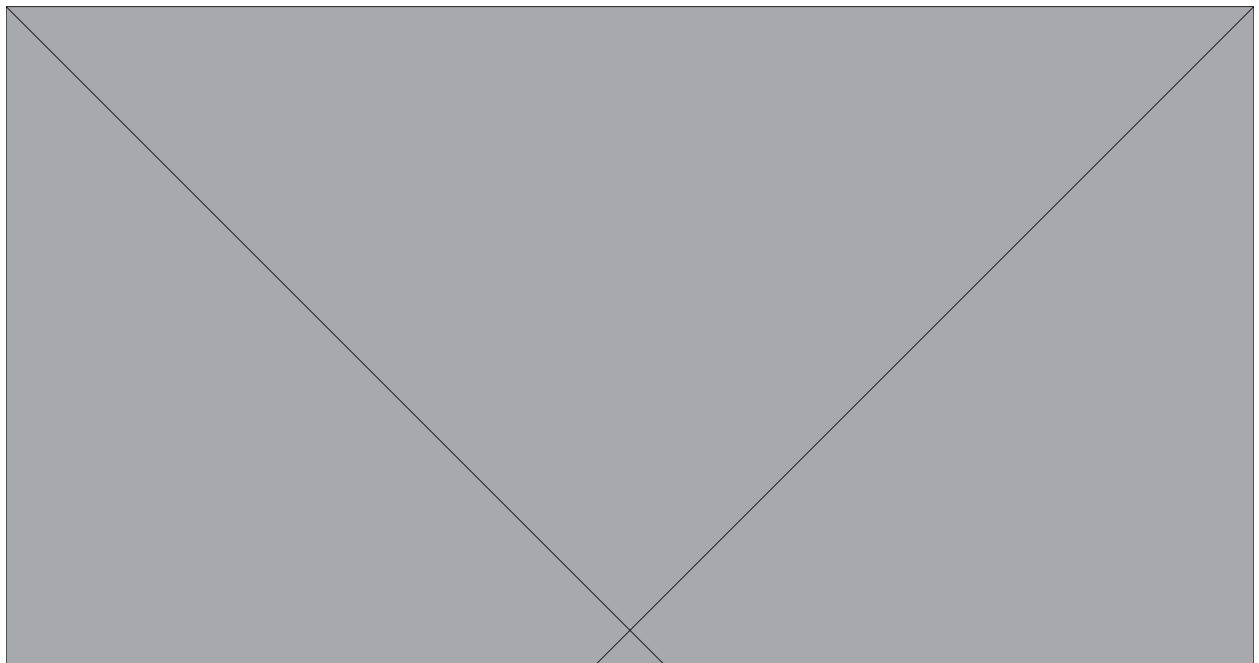


Ecophon Combison™ Barrier

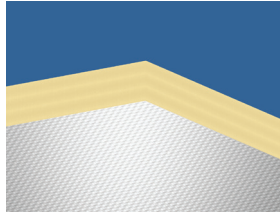
For use as acoustic barrier above partitions in plenum to improve the room to room sound insulation. The Combison™ Barrier should be used together with other Ecophon systems. Each panel is easily demountable.

The panels are manufactured from high density glass wool with an aluminium foil on one side. The approximate weight of the panel is 3,5 kg/m².

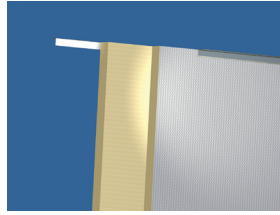


SYSTEM RANGE

Size, mm	1200x600
Direct	•
Thickness (THK)	40
Inst. Diagr.	M160



Combison Barrier tile



Section of Combison Barrier system



Acoustic

For use as acoustic barrier above partitions in plenum to improve the room to room sound insulation. The Combison Barrier should be used together with other Ecophon systems.



Accessibility

The tiles are demountable.



Cleanability

Not applicable.



Visual appearance

Not applicable. The panel has aluminium foil on one side.



Influence of climate

The tiles withstand a permanent ambient RH up to 95% at 30°C following the test standard in EN 13964. The tiles are also available for especially demanding conditions. Please contact Ecophon for specifying your project.



Indoor Climate

Certificate / Label	
Finnish M1	•
French VOC, A+	•
Swedish Asthma and Allergy Association	•
Danish Indoor Climate Label	•
California Emission Regulation, CDPH	•

Certified by the Indoor Climate Labelling, recommended by the Swedish Asthma and Allergy Association.



Environmental influence

Fully recyclable.



Fire safety

Country	Standard	Class
Europe	EN 13501-1	A2-s1,d0

The glass wool core of the tiles is tested and classified as non-combustible according to EN ISO 1182.



Mechanical properties

No additional live load is allowed.



Installation

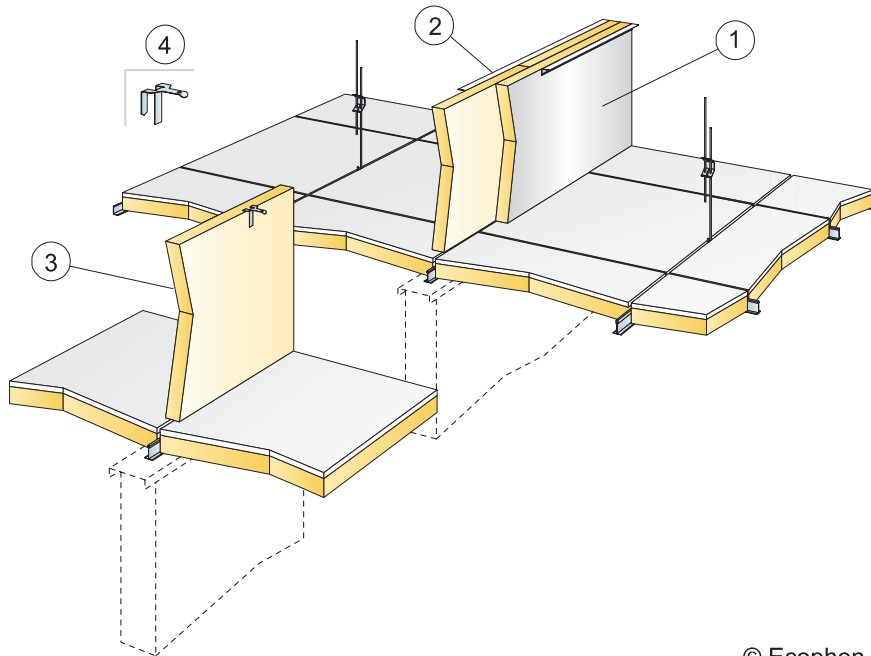
Installed according to installation diagrams, installation guides and drawing aid. For information regarding minimum overall depth of system see quantity specification.



CE

The CE marking confirms important product performance such as sound absorption, emissions, fire safety and load bearing capacity. All Ecophon ceiling products are CE marked according to European standard EN13964, and individual product performance is declared in Declaration of Performance (DoP) documents.

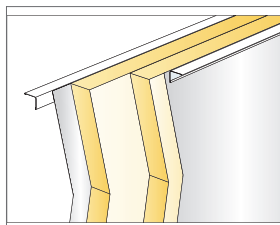
INSTALLATION DIAGRAM (M160) FOR ECOPHON COMBISON BARRIER



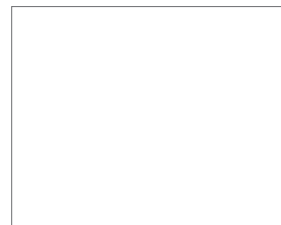
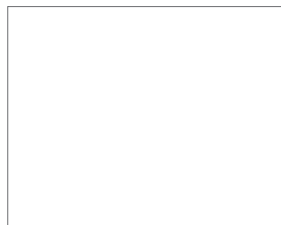
© Ecophon Group

QUANTITY SPECIFICATION (EXCL. WASTAGE)

		Size, mm
		1200x600
1	Combison Barrier in double layers with displaced joints and exposed alu-foil side	as required
2	Connect Angle trims position upper part of Barrier panels	as required
3	Combison Barrier in single layer	as required
4	Connect Frieze bracket, position upper part of Barrier panels	as required



Double layers of Combison Barrier with Connect Angle trim



Size, mm	Max live load [N]	Min load bearing capacity [N]
1200x600	-	-

Live load/load bearing capacity