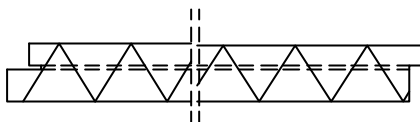


THE ROOM-TO-ROOM AIRBORNE SOUND INSULATION ACCORDING TO ISO 140-9:1985

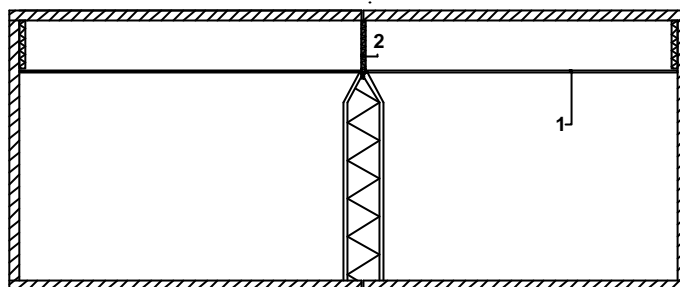


principal: Ecophon (S)

construction tested: variant 6



1:
type: Master D/alpha
material: glasswool
panel sizes: 600 x 600 mm nominal grid size
total thickness: 40 mm
finish front: painted glasstissue
finish rear: glasstissue
total mass: 4.5 kg/m² (checked by the laboratory)
edge: D



2:
type: Combison Barrier (80)
material: glasswool
panel sizes: 1197 x 600 mm
total thickness: 40 mm
total mass: 3.5 kg/m²

volume receiving room: 54 m³

reference area: 10 m²

surf. mass ceiling: 4.5 kg/m²

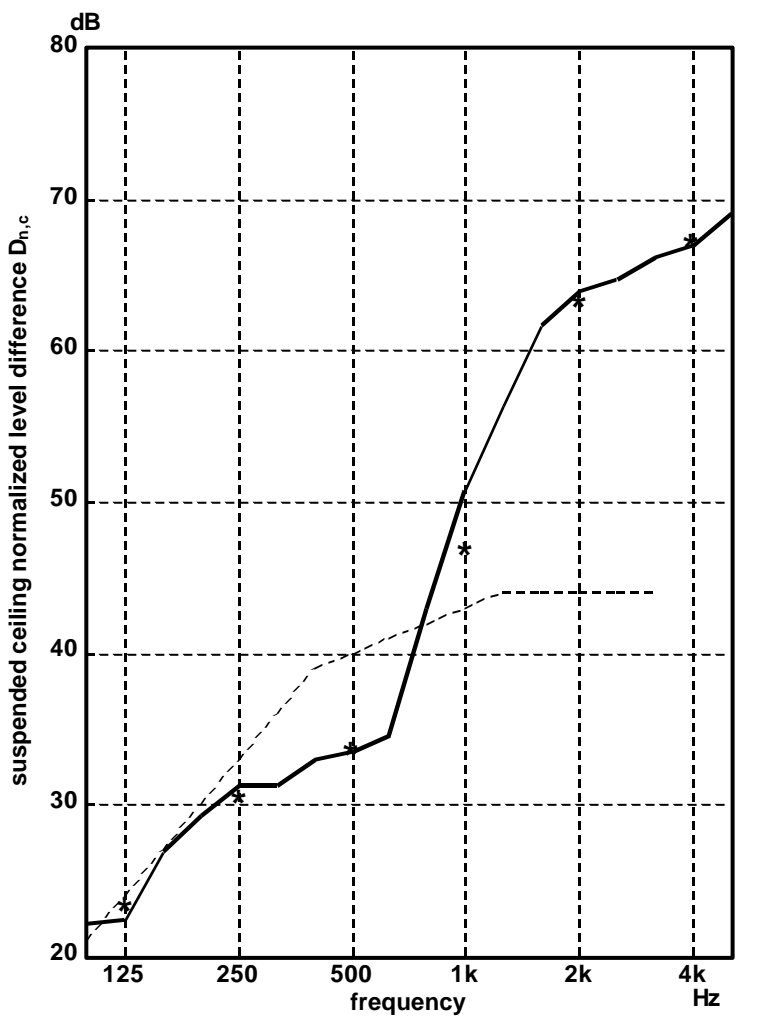
measured at: laboratory conditions

signal: broad-band noise

bandwidth: 1/3 octave

ISO 717-1:1996

$$D_{n,c,w}(C; C_{tr}) = 40(-1; -5) \text{ dB}$$



— 1/3 oct.
 * 1/1 oct.

	125	250	500	1k	2k	4k
1/3 oct.	22.4	31.2	33.5	50.8	63.9	66.9
1/1 oct.	23.3	30.4	33.6	46.9	63.2	67.2

publication is permitted for the entire page only

Mook, 18-12-2003